

POSTAL MANAGEMENT ONLINE
WITH THE U.S. POSTAL SERVICE®

iMCM™ G2



Powerful Shipping
and Mailing Software

HASLER
America's better choice.®

IMCM™ G2 POSTAL MANAGEMENT

A COORDINATED APPROACH THAT OFFERS YOU REAL BENEFITS

The United States Postal Service® has entered the shipping market in a big way, taking significant strides in offering competitive shipping and mailing alternatives at very cost effective prices. With Express Mail® service, Priority Mail® service, Flat Rate shipping, comprehensive delivery schedules and coverage, the U.S. Postal Service® can serve all of your shipping and mailing needs.

To help our customers take advantage of these values, Hasler is working closer than ever with the Postal Service™ and has rolled out the iMCM™ G2 Postal Management (G2PM) solution, a simple yet powerful tool that provides you with dramatic productivity gains while helping you leverage the cost benefits and special services offered by the U.S. Postal Service®.



THE G2PM ADVANTAGE

Relying on decades of close cooperation with the Postal Service™, Hasler is now offering a solution that leverages all of the benefits offered by the U.S. Postal Service®. This is made possible by the integrated nature of G2PM; connecting directly to the U.S. Postal Service® systems through the internet, G2PM provides cost savings, package tracking capabilities, and discounts.

Use G2PM to bring your mail center "online" with the U.S. Postal Service®.



OVERNIGHT AND ONLINE

Need to get a package delivered tomorrow? If it is in Zone 1, let G2PM determine if Priority Mail® can get it there the next day at a great price. Going further than Zone 1? Maybe Express Mail® is the answer. Express Mail® delivers next day to more locations than any other carrier and it does it on Saturday at no extra charge. The Hasler/U.S. Postal Service® relationship translates into significant postal savings and increased efficiencies for a Postal Service™ customer.

Need to track your shipment? Hasler's new G2PM software is designed to meet the specific requirements and needs of customers looking to standardize on U.S. Postal Service® shipping and mailing services. With U.S. Postal Service® compliant shipping labels that include barcodes and tracking numbers, G2PM can automatically tie shipments into the customer's address database. This creates an end-to-end shipping and tracking solution that provides both pickup and Delivery Confirmation™ service along with proof of signature.

G2PM takes your mailroom "online." It employs cutting edge internet and touch screen technologies to improve efficiency and productivity for outgoing mail and parcel shipments while providing significant discounts via online commercial pricing.

IMPROVED SERVICES AT REDUCED COSTS

The relationship between Hasler and the U.S. Postal Service® brings customers the best of both worlds: a powerful, internet-connected management system with control over rating, processing and accounting for all outbound mail and shipping activity, combined with the significant cost advantages now offered by the Postal Service™. With discounts for shipping online, free supplies, Free Package Pickup*, and free forwarding and return services for your undelivered shipments, you'll get shipments out the door fast and delivered reliably, all while keeping costs down.

* For complete details on Free Package Pickup, visit Schedule a Pickup on usps.com®.



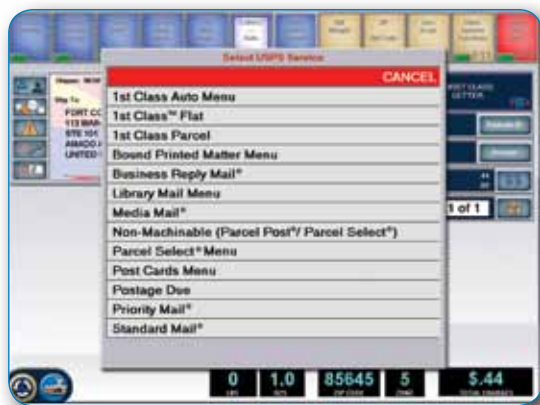
UNMATCHED U.S. POSTAL SERVICE® BENEFITS

- No fuel surcharges
- Money back guarantee* on Express Mail® overnight
- Legal size envelopes that don't require folding
- No residential delivery charges
- Discounted commercial pricing
- No rural delivery surcharges
- Delivery to PO Box addresses
- Free supplies
- Free Package Pickup**
- Free Saturday delivery***
- No minimum shipping

* Express Mail® service commitments are based on drop-off times. See usps.com® for details.

** For complete details on Free Package Pickup, visit Schedule a Pickup on usps.com®.

***Except if Saturday is a national holiday when Express Mail® service is available for an added charge.



G2PM FEATURES INCLUDE:

- **Internet Tracking** – Instant access to online tracking and delivery status, including Delivery Confirmation™ service and signature capture.
- **Integrated Labeling** – Includes printing, postage rates and address confirmation.
- **Work Ahead** – Unique feature that allows users to initiate the next mail job while the current one is being processed.
- **Single System Control** – Use of a single interface, with accounting and reporting capabilities and consistency across departments.
- **Priority Mail® service** – Taking advantage of significant volume and commercial discounts.
- **Scalability** – Can expand to desktop shipping and web applications.
- **Address Correction & Validation** – Makes corrections, guaranteeing the best routing decisions.
- **Barcodes** – Printed barcodes with embedded tracking numbers.
- **Easy operation** – Intuitive, graphical user interface screen makes it easy to use.



Hasler Postal Management systems let you quickly and efficiently take control of your mailing and shipping operation, giving you the ability to monitor and track every piece of outbound mail or package flowing through the mailroom. And you can do it faster and for less with iMCM™ G2PM and the United States Postal Service®.

HASLER PRODUCTS AND SERVICES

For a demonstration or more information, please contact your local Hasler dealer, or email info@haslerinc.com

HASLER | 800.995.2035
www.haslerinc.com

Hasler's network of independent dealers provides sales, service, and support throughout North America.

Hasler™ and America's better choice® are trademarks. All other company and product names may be trademarks and are the property of their respective owners. All information in this document, including descriptions of features, functions, performance and specifications is subject to change without written notice at any time.

U.S. Postal Service, Express Mail, Priority Mail, Delivery Confirmation, First-Class Mail, Standard Mail, Media Mail, Business Reply Mail, Parcel Select and Postal Service are among the many trademarks of the U.S. Postal Service.



EAGLE Registrations Inc.
SERVICE • INTEGRITY • VALUE
ISO 14001 and OHSAS 18001
Registered by EAGLE Registrations Inc.

©2010 Neopost USA Inc. All Rights Reserved.
H025 4/10
2.5M

- Mailing Systems
- Postal Scales
- Folders and Inserters
- Address Printers
- Tabbers
- Letter Openers
- Document Management
- Mail Center Management
- Postal Accounting
- Mail Sorting and Tracking
- Service and Supplies
- Leasing Services